

Product End of Life Information

Product: Interwrite Pad, School Pad, Meeting Pad

Purpose:

This document is provided to inform and guide the recycling process of our products as required by the EU WEEE Directive 2002/96/EC. This document identifies components and materials under the WEEE directive and it contains the proper method for disassembling this product.

Product Disassembly Instructions:

Disassembly instructions provide the steps necessary to be able to separate each part and component. Disassembly instructions also describe the tools necessary to take the product apart.

Product Material Information:

The following parts, components, and substances should be disposed of or recovered separately from other WEEE in compliance with the EU Directive 2002/96/EC.

Batteries- Tablet: contains a Nickel Metal Hydride battery pack (3 AA cells)
Cordless Pen: contains one Nickel Metal Hydride battery (1/3 AAA)

This product does not use internal batteries based on mercury, cadmium, lead or their compounds.

Mercury- Parts used in GTCOCalComp products do not contain intentionally added mercury.

Liquid Crystal Displays (LCD > 100 cm²) - Product does not contain an LCD.

Cathode Ray Tubes (CRT) - Product does not contain a CRT.

Plastics-

This Product may contain plastic parts greater than 25 grams. Many of the parts are bromine free however they are labeled (molded directly into the plastic) per ISO 11469:2000 (E).

Typical marking format is: >Polymer Abbreviation – FR (#) <

For example: > PC + ABS FR(40) <

The following parts are not marked:

Pad: -Tablet overlay (Q) is polycarbonate (>PC<)
-Grid (K) is polyester printed with silver ink
-Light Pipe (integrated into part L) is acrylic (>PMMA<)

Pen: -Outer shell (30), Cap (31), and Switch Button (32) are ABS (>ABS<)
-Inner Housing (33) and White Spacer (40) are Acetal (>POM<)

Capacitors with PCBs- GTCOCaComp does not use capacitors containing PCBs.

Electrolyte Capacitors (height or diameter > 25mm)- Electrolyte Capacitors (height or diameter >25mm) are not present in this product.

Asbestos and its compounds- Parts used in GTCOCaComp products do not contain asbestos and its compounds.

Radioactive Substances- Parts used in GTCOCaComp products do not contain radioactive substances.

Beryllium and its components- Beryllium may be present in electronic components as a copper beryllium alloy, which contains less than 2% beryllium. CuBe alloys may be used in various components such as connectors, switches, relays, current carrying springs, integrated circuit sockets, and RF shielding.

Gases - Parts used in GTCOCaComp products do not contain gasses which fall under Regulation (EC 2037/2000) and all hydrocarbons.

Components with Pressurized Gas- Product does not contain parts with pressurized gas.

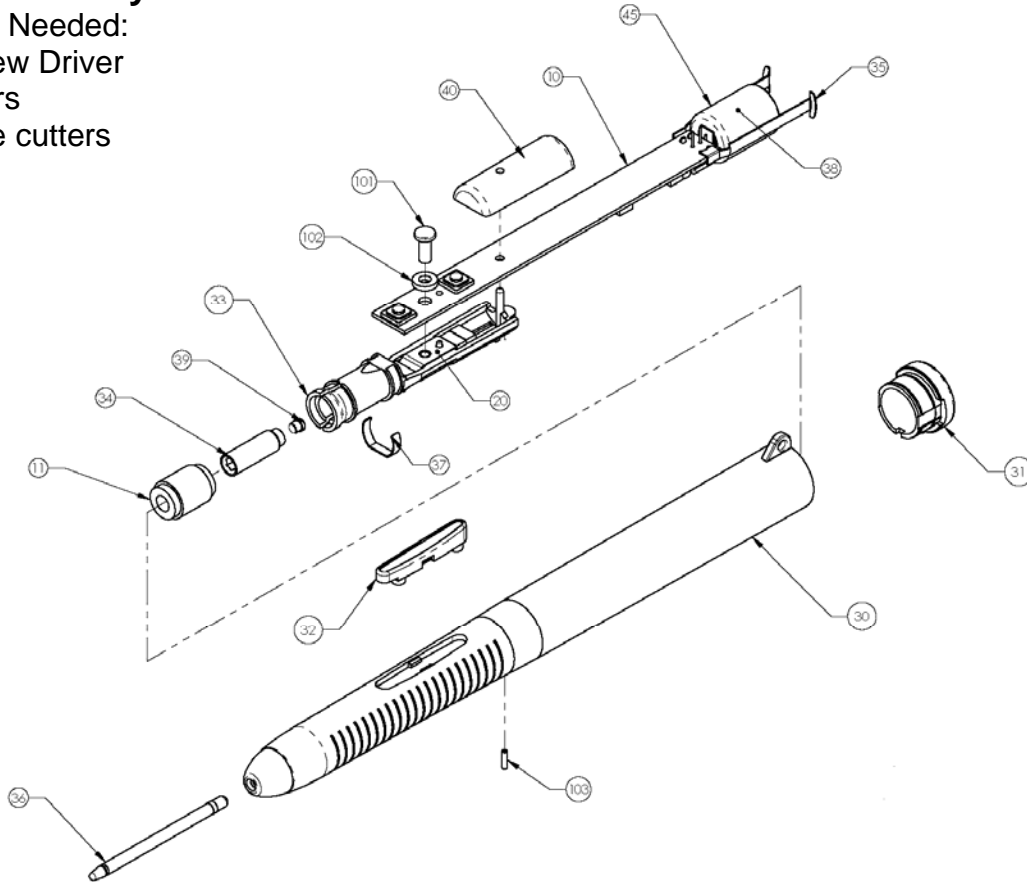
Liquids- Product does not contain liquid.

7. Separate the three layers (G&F) of shielding by removing the tape on all sides.
8. Remove the grid (K) stuck to the top shell (L).
9. Remove the light pipe (clear part with four lenses) from the top cover (L).

Disassembly Instructions: Pen

Tools Needed:

- Screw Driver
- Pliers
- Wire cutters



1. Use pliers to pull the top cap (31) off of the pen.
2. Use a screwdriver to snap the switch (32) out of the housing.
3. Remove pin (103) by cutting away the plastic with wire cutters.
4. Depress the latch on the bottom side of the pen.
5. Pull the PCB from the housing.
6. Unscrew the PCB and pull the wire bobbin (11) off the housing (20) to isolate the PCB.
7. Pull the tip out from the pen (36).
8. Remove metal clip (37) from the inner housing and then take off the plastic sensor.
9. To remove the battery, cut the wires holding it to the PCB.