



Interwrite *Virtual* PRS FOR PCs User's Guide

Interwrite Virtual PRS is a software application that mimics the look and functionality of the PRS RF Clicker. With Virtual PRS installed on a computer attached to a Local Area Network or Wireless Network, you can participate in a PRS Session just as you would if you were using a PRS RF Clicker, answering questions and turning in homework assignments. Virtual PRS displays an image that resembles the PRS RF Clicker and works in the same way. You type in your answer on the computer keyboard, it displays in the VPRS Display, and you type the Enter key to send your answer to the PRS software on the host computer.

The Virtual PRS software must be installed on your computer. Virtual PRS is then activated by entering a set of activation codes. When you register on the GTCO CalComp/vprs Web site and download the Virtual PRS software, the activation codes will be displayed. These codes are stored in your Virtual PRS account and, in addition, are emailed to you. Software registration, installation, and activation are one-time-only operations.

When you are ready to participate in a PRS session, you will *connect* to the Class by entering the Host IP Address that is displayed on the RF Status Bar at the bottom of the PRS application window. Once connected, you will be able to answer questions or submit homework assignments. This User's Guide describes the registration/download, installation and setup of Virtual PRS, how to use Virtual PRS to send responses and homework assignments, and the Virtual PRS menu options.

Installation and Setup

Register and Download

Log onto our Web site at www.InterwriteLearning.com/vprs to register and download the Virtual PRS software. When you register, the activation codes for Virtual PRS will display. The codes are saved in your registration account. In addition, you will receive an email containing the codes. Download the Virtual PRS software to a location on the computer you will be using during PRS sessions.

Install

Windows

- 1 Navigate to the location of the downloaded Virtual PRS application.
- 2 Double-click on the Virtual PRS application icon.
- 3 Follow the onscreen installation instructions.

Mac

- 1 Navigate to the location of the downloaded Virtual PRS application.
- 2 Double-click on the Virtual PRS application icon.
- 3 Follow the onscreen installation instructions.

Linux

Virtual PRS is compatible with every Linux 2.6 kernel with the **udev** file system. The Virtual PRS application software must be installed on Linux by a user logged in as *root*.

- 1 Log in as *root*.
- 2 Double-click on the Virtual PRS application icon.
- 3 Follow the onscreen instructions for the software installation.

Activate

- 1 From the **File** menu (see graphic below), select the *Activate* menu option.
- 2 Enter the *Serial Number* and *Authorization* codes in their respective fields.
- 3 Click on the **Activate** button.

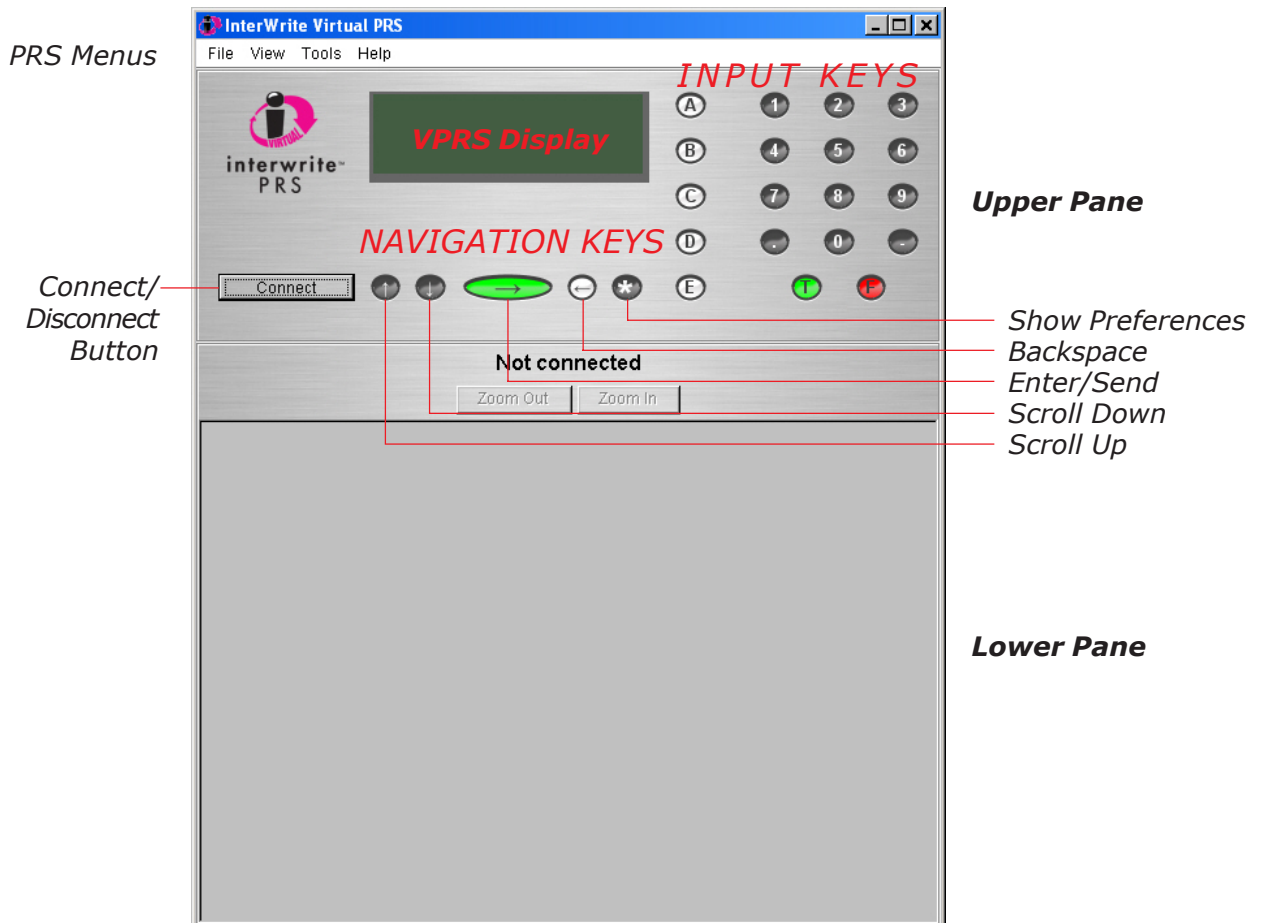
Set Preferences

- 1 From the **File** menu, select the *Preferences* menu option. (On the Mac, *Preferences* is on the InterWrite Virtual PRS application menu.)
- 2 Enter your *Last Name* and *First Name*.
- 3 Click on the **OK** button to accept the preference settings.

Interwrite Virtual PRS

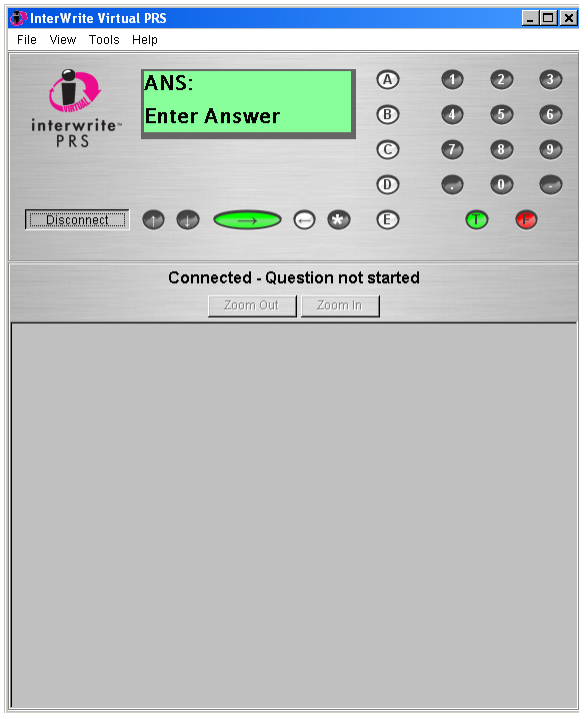
Your instructor will enable Interwrite Virtual PRS Support in the PRS software. This ensures that the **Host IP Address** will be published every time an RF Class is started. When your instructor starts an RF Class, you will *connect* to it. (Students using PRS RF Clickers *join* the Class.)

You will know that Virtual PRS Support has been enabled in PRS when you see the **Host IP Address** in angle brackets displayed on the RF Status Bar next to the name of the Class. If an RF Receiver is attached to the classroom computer, another instance of the Class will display with the **Quick Jump** value in angle brackets for students using RF Clickers to join the Class.

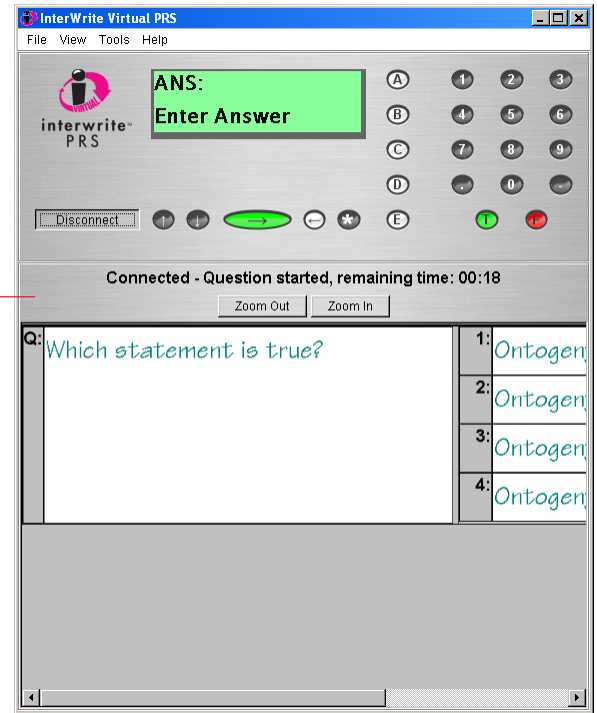


The Virtual PRS window consists of two panes. The Upper Pane displays the Virtual PRS instrument panel. The Lower Pane displays a snapshot of each Question during a PRS Session. Use the **Zoom** buttons to size the Question snapshot by zooming in or out. The **Status Bar** between the Upper and Lower Panes displays the status of the Virtual PRS connection and the Timer when a timed Question has been started, or a Self-Paced Session is in progress.

Using Interwrite Virtual PRS



Virtual PRS Connected



Question Started

Status Bar

Connect

- 1 Start up Virtual PRS.
- 2 Click on the **Connect** button.
- 3 The first time you connect to PRS, you will enter your **Student ID** and the **Host IP Address** in the **Connect to PRS Host** dialog. That information is retained, making subsequent connections easy – just click on the **Connect** button, then click on the **OK** button to process the connection to the PRS Class. Nevertheless, always check the Host IP Address displayed in PRS against the one in your Virtual PRS Connect dialog to make sure they are the same.
- 4 When the Class is ended, click on the **Disconnect** button.

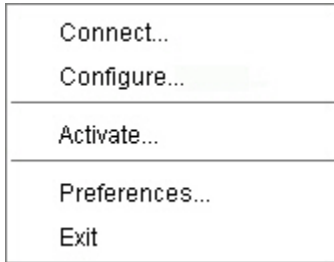
Inputting and Sending Answers

You have the choice of clicking on the Input Keys on the Virtual PRS dialog, or using your computer keyboard when you are entering answers to Questions during a Session. Regardless of which input method you use, each keystroke will display in the **ANS** field on the Virtual PRS Display. Status messages appear in the display below the ANS field.

Virtual PRS Key	Equivalent Keyboard Key	Description
	Period	Enter a decimal point in a Numeric answer
	Hyphen	Enter a minus sign as the first character in a Numeric answer
	Up Arrow	Scroll up to the previous Question during a self-paced test
	Down Arrow	Scroll down to the next Question during a self-paced test
	Enter	Send the answer during a PRS Session Save the answer to a homework assignment question
	Backspace	Backspace one character position
	N/A	Display the Preferences dialog

The Interwrite Virtual PRS Menus

File Menu

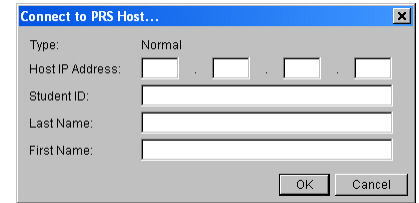


- Connect...
- Configure...
- Activate...
- Preferences...
- Exit

The Virtual PRS menus provide a variety of features for setting up Virtual PRS and for using it to do homework assignments.

Connect...

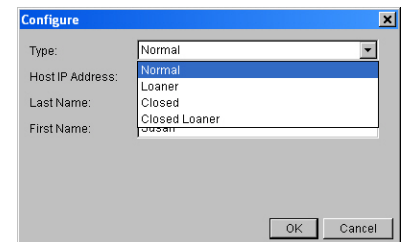
The *Connect* File menu option and the **Connect** button both display the **Connect to PRS Host** dialog.



Configure...

By default, Virtual PRS is configured as *Normal*. If you installed Virtual PRS on your personal computer for use in classes that are running PRS, there is no need to change the configuration.

When Virtual PRS is installed on school-owned computers, the instructor has a variety of configuration options to choose from. If the classroom computers are going to be used by different students at various times, the instructor can configure each Virtual PRS installation as a *Loaner*. The hallmark of a *Loaner* is that it always prompts for First Name, Last Name and Student ID before it will connect to the Class.



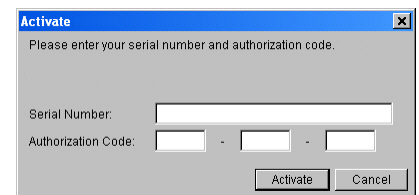
The *Closed* configuration is typically used when each classroom computer is assigned to a specific individual. In a *Closed Class* environment, Virtual PRS configured as *Closed* automatically connects to the Class and does not display the **Connect to PRS Host** dialog. The instructor sets up each Virtual PRS installation with the student's name and a preassigned Student ID. Each *Closed* configuration is password-protected, so the configuration can be changed only by the person who knows the password.

The *Closed Loaner* configuration combines the benefits of the *Loaner* configuration and the *Closed* configuration. It is used in a classroom/computer lab where a single computer is used by many different students. The password-protected configuration prompts for the student's name and Student ID before it will connect to the Class.

Activate...

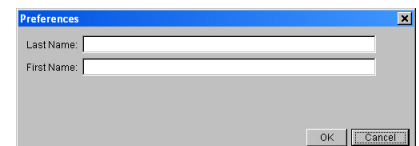
Virtual PRS must be activated before it can be used in a PRS session. The set of activation codes is obtained when you register on the Interwrite Learning Web site at

www.InterwriteLearning.com/vprs



Preferences...

The student's First Name and Last Name are established in the **Preferences** dialog. This information is transmitted to PRS, along with the Student ID, to ensure the student's answers are attributed to him or her.



View Menu

◆ Small
Medium
Large
✓ Buttons
✓ Question

You can change the size of the Virtual PRS window and buttons from the default *Small* to *Medium*, or to *Large*.

By default, the button keys display in the Upper Pane of the Virtual PRS window and a snapshot of the question displays in the Lower Pane. The check mark indicates a view is turned on. You can turn off either or both of these views from this menu.

Tools Menu

Homework...

Virtual PRS can store up to three homework assignments. Homework assignments are *collected* during a specially configured PRS Session. The **Send** button on the **Homework** dialog is active only when a Homework Collection Session is running.

Question Number	Answer
01	
02	
03	
04	
05	
06	
07	
08	
09	
10	
11	
12	
13	
14	
15	

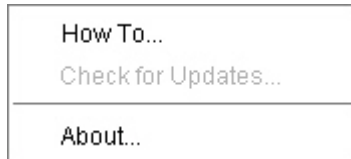
- 1 Select the *Homework* option from the **Tools** menu.
- 2 Enter the *Test Number* of the homework assignment in the Test Number field to identify this homework assignment.
- 3 Click on the *Answer* field of the Question you are going to answer. Type your answer to the Question.
- 4 Press the **Enter** key, or move to another Answer field to save your answer.
- 5 Click on the **OK** button to save the homework assignment. You can return to any of the homework assignments you have saved and continue answering questions or edit existing answers. The homework assignment will remain in place until you delete it by clicking on the **Clear** button.

Turning in Homework Assignments

Homework assignments are collected during a Homework Collection Session.

- 1 Connect to the Class.
- 2 Select the *Homework* option from the **Tools** menu.
- 3 Click on the Homework Tab of the assignment being collected.
- 4 When the instructor has started a Homework Collection Session, the **Send** button will be active. Click on the Send button to turn in your homework assignment.

Help Menu



How To...

This Virtual PRS User's Guide and a number of Virtual PRS tutorials can be accessed by selecting this menu option.

Check for Updates...

Updates to the Virtual PRS will be available on the Interwrite Learning Web site at **www.InterwriteLearning.com**. You should periodically select this menu option to ensure you have the latest version of Virtual PRS.

About...

The *About* menu option displays software version and contact information.



Interwrite Learning
8224 East Evans Road
Scottsdale, AZ 85260
USA
TEL: 480.948.6540
SUPPORT: 480.443.2214
FAX: 480.948.5508

Interwrite Learning
7125 Riverwood Drive
Columbia, MD 21046
USA
TEL: 410.381.6688
FAX: 410.290.9065
SALES: 866.496.4949

Interwrite Learning, Inc.
A Division of GTCO CalComp GmbH
Kreiller Strasse 24
81673 Munich
Germany
TEL: +49 (0) 89 370012-0
FAX: +49 (0) 89 370012-12

www.InterwriteLearning.com

Copyright© 2007 Interwrite Learning™

Interwrite Learning and Interwrite are trademarks of GTCO Corp.

All other products and company names are the trademarks or registered trademarks of their respective owners.

The information contained in this document is subject to change without notice. Interwrite Learning assumes no responsibility for technical, or editorial errors, or omissions that may appear in this document, or for the use of this material. Nor does Interwrite Learning make any commitment to update the information contained in this document. This document contains proprietary information which is protected by copyright. All rights reserved. No part of this document can be photocopied or reproduced in any form without the prior, written consent of Interwrite Learning.