



interwrite™
PRS

Virtual PRS FOR PDAs

User's Guide

Virtual PRS for Windows PDAs is a software application that allows you to use your PDA to participate in a PRS session by mimicking the look and functionality of the PRS RF Clicker.



Your Pocket PC device (PDA) must be running Windows Mobile 3.0 or 5.0 and have Wi-Fi capability. Supported devices include the HP iPaq rx1955 Pocket PC and the Dell Axim X5 Handheld.

You must have MS ActiveSync and a connection to your PDA established on the computer from which you will be installing Virtual PRS.

With Virtual PRS installed on your PDA, you can participate in a PRS Session just as you would if you were using a PRS RF Clicker, answering questions and turning in homework assignments. Virtual PRS displays an image that represents the PRS RF Clicker interface. You can tap the Virtual PRS keys with your stylus, or display the keyboard and *type* your answer using the keyboard. Virtual PRS transmits your answer to the PRS software on the host computer.

Virtual PRS is a *.NET Compact Framework 2.0* application. You must have *.NET Compact Framework 2.0* installed on your PDA in order to run Virtual PRS. You can download the *Microsoft® .NET Compact Framework 2.0 Service Pack 1 Redistributable* software at:

<http://www.microsoft.com/downloads/details.aspx?FamilyID=0c1b0a88-59e2-4eba-a70e-4cd851c5fcc4&DisplayLang=en>

and install it on your PDA device using Active Sync.

After you have installed *.NET Compact Framework* on your PDA, Virtual PRS can be installed. The Virtual PRS software is obtained by downloading it from the GTCO CalComp Web site. Before you can use Virtual PRS in a PRS session, it must be activated by entering a set of activation codes. The codes are available when you register on the GTCO CalComp Web site. The activation codes are also sent to you via email. Software download, installation, and activation are one-time-only operations.

When you are ready to participate in a PRS session, you will *connect* to the Class by entering the Host IP Address that is displayed on the RF Status Bar at the bottom of the PRS application window. Once connected, you will be able to answer questions or submit homework assignments. This User's Guide describes the registration/download, installation and setup of Virtual PRS and how to use Virtual PRS to send responses and work on homework assignments.

Installation and Setup

Register

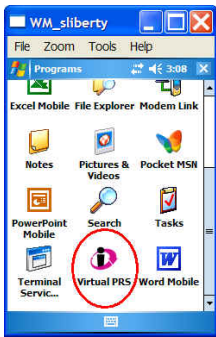
Log onto our Web site at www.gtocalcomp.com/vprs to register and download the Virtual PRS software. When you register, the activation codes will display. The codes are saved in your registration account on the Web site. In addition, you will receive an email containing the codes. You will input these codes to activate your Virtual PRS software.

Install the Virtual PRS Software

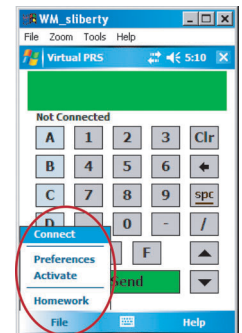
Download the Virtual PRS software from the GTCO CalComp Web site to a location on the computer you will be using to connect to your PDA. The download consists of four files in a zipped file, *VirtualPRS.zip*. The files are *Release Notes.html*, *setup.exe*, *VirtualPRS.CAB*, and *setup.ini*.

- 1 Unzip *VirtualPRS.zip* to a folder on your desktop.
- 2 Start up ActiveSync.
- 3 Run *setup.exe* and follow the onscreen prompts.

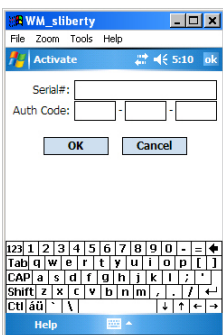
Run Virtual PRS



Virtual PRS is run by clicking on the Virtual PRS icon in the **Programs** folder.



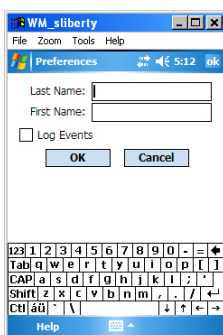
Activate



- 1 From the **File** menu at the bottom of the Virtual PRS display, select the *Activate* menu option.
- 2 Enter the *Serial Number* and *Authorization* codes you received in their respective fields.
- 3 Click on the **OK** button.

Virtual PRS will display a prompt that indicates the length of the Activation period.

Set Preferences



- 1 From the **File** menu, select the *Preferences* menu option.
- 2 Enter your *Last Name* and *First Name*.
- 3 Enable *Log Events* (used for troubleshooting) by clicking on the checkbox.
- 4 Click on the **OK** button to accept the preference settings.

Virtual PRS

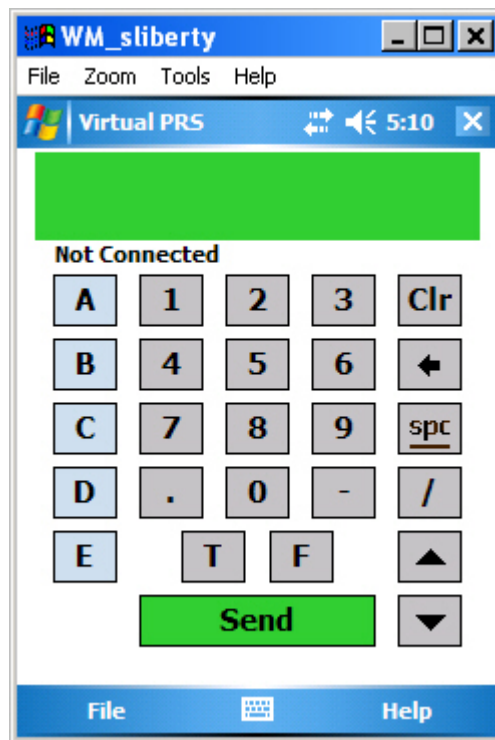
Your instructor will enable *Virtual PRS Support* in the PRS software. This ensures that the **Host IP Address** will be published every time an RF Class is started. When your instructor starts an RF Class, you will connect to it. (Students using PRS RF Clickers join the Class.)

You will know that Virtual PRS Support has been enabled in PRS when you see the **Host IP Address** in angle brackets displayed on the RF Status Bar next to the name of the Class. If an RF Receiver is attached to the classroom computer, another instance of the Class will display with the **Quick Jump** value in angle brackets for students using RF Clickers to join the Class.

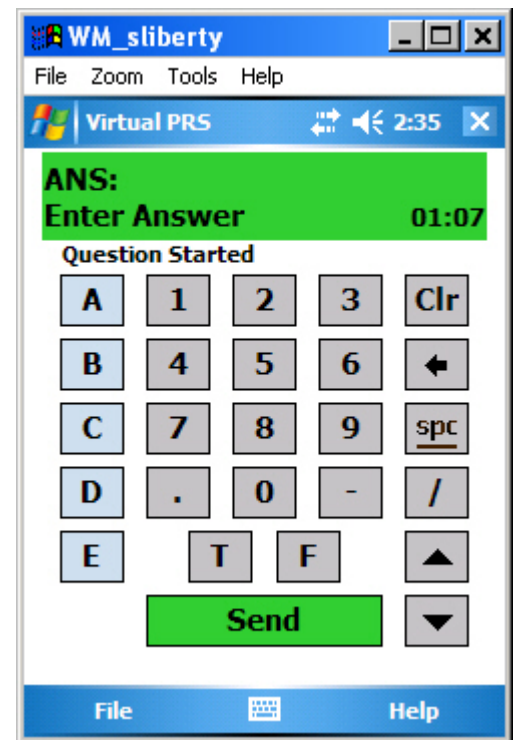
Virtual PRS Display

Keypad

Menu Bar












Virtual PRS interface before Connected



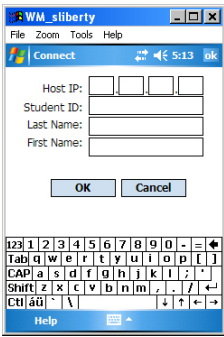
Virtual PRS interface after Connected with PRS Session started

The Virtual PRS interface consists of the **Virtual PRS Display**, the **Keypad** and the **Menu Bar**. The top line of the Virtual PRS Display shows the **ANS** field. This is where the keys you tap, whether on the Keypad or the pop-up keyboard, will display. The bottom line of the Virtual PRS Display shows status messages. When a PRS Session is in progress, the Timer will display to the right of the status messages. Depending on the type of Session in progress, the Timer will show the amount of time left to answer the Question or the amount of time left in the Self Paced Session. Connection status shows below the Virtual PRS Display.

The Keypad has a full set of numeric keys, as well as the alpha keys **A** through **E** and **T** and **F**. **T** and **F** are used to respond to true/false questions, while the letters **A** through **E** are used when responding to lettered multiple choice questions. Additional keys include:

- | | | | |
|---|--------------------------------|--|--|
|  | Clear ANS field |  | Scroll Up to previous question (used during Self Paced Session) |
|  | Backspace one character |  | Scroll Down to next question (used during Self Paced Session) |
|  | Enter one space |  | Decimal Point |
|  | Forward Slash |  | Minus Sign |
|  | Send Answer | | |

Connect

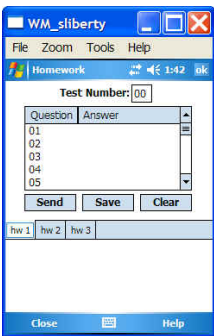


- 1 Start up Virtual PRS by tapping the Virtual PRS icon in the **Programs** folder.
- 2 Pop-up the **File** menu and select the *Connect* option.
- 3 The first time you connect to PRS, you will enter the **Host IP Address**, your **Student ID**, **Last Name**, and **First Name** in the **Connect** dialog. That information is retained, making subsequent connections easy – just click on the **Connect** button, then click on the **OK** button to process the connection to the PRS Class. Nevertheless, always check the Host IP Address displayed in PRS against the one in your Virtual PRS Connect dialog to make sure they are the same.
- 4 When the Class is ended, click on the **Close** button in the upper right corner to exit Virtual PRS.

Input and Send Answers

You have the choice of tapping on the Keypad keys, or popping up the keyboard to use it to enter your answers in the **ANS** field. Regardless of which key input method you use, each keystroke will display in the **ANS** field on the Virtual PRS Display. Status messages appear in the Display below the ANS field. Tap the **Send** key to transmit answers to PRS.

Do Homework Assignment



Virtual PRS can store up to three homework assignments. Homework assignments are *collected* during a specially configured PRS Session. You must be connected to the Class and your instructor must have a Homework Collection Session started up before you can *Send* in your homework assignment.

- 1 Select the *Homework* option from the **File** menu.
- 2 Pop-up the keyboard.
- 3 Enter the *Test Number* of the homework assignment in the **Test Number** field to identify this homework assignment.
- 4 Tap on the number of the Question you are going to answer to highlight it. Type your answer to the Question.
- 5 Press the **Save** key, or tap on another Answer field to save your answer.
- 6 Click on the **OK** button to save the homework assignment. You can return to any of the homework assignments you have saved and continue answering questions or edit existing answers. The homework assignment will remain in place until you delete it by tapping on the **Clear** button.

Turn in Homework Assignment

Homework assignments are collected during a Homework Collection Session.

- 1 Connect to the Class.
- 2 Select the *Homework* option from the **File** menu.
- 3 Click on the Homework Tab of the assignment being collected.
- 4 Tap on the **Send** button to turn in your homework assignment when instructed to do so.

Help Menu

Help Topics

This Virtual PRS User's Guide and a number of Virtual PRS tutorials can be accessed by selecting this menu option.

About..

The *About* menu option displays software version and contact information.

GTCO CalComp
PERIPHERALS

GTCO CalComp, Inc.
8224 East Evans Road
Scottsdale, AZ 85260
USA

TEL: 800.856.0732
480.948.6540
FAX: 480.948.5508

GTCO CalComp, Inc.
7125 Riverwood Drive
Columbia, MD 21046
USA

TEL: 800.344.4723
410.381.6688
FAX: 410.290.9065

GTCO CalComp GmbH
Kreillerstrasse 24
81673 Muenchen
Germany

TEL: +49 (0) 89 370012-0
FAX: +49 (0) 89 370012-12

www.gtcocalcomp.com



interwrite™
PRS

Copyright© 2006 GTCO CalComp Inc.
InterWrite is a trademark of GTCO CalComp Inc.
All other products and company names are the
trademarks or registered trademarks of their
respective owners.

The information contained in this document is subject to change without notice. GTCO CalComp assumes no responsibility for technical, or editorial errors, or omissions that may appear in this document, or for the use of this material. Nor does GTCO CalComp make any commitment to update the information contained in this document. This document contains proprietary information which is protected by copyright. All rights reserved. No part of this document can be photocopied or reproduced in any form without the prior, written consent of GTCO CalComp Inc.